

Year 4 Maths

Previous learning

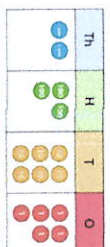
Different angles such as right, obtuse and acute
Lines which are perpendicular and parallel
Numbers to 1000

Using a bar chart
Digital time in 12 and 24 hour
Using perimeter
Using column method

Number and place value



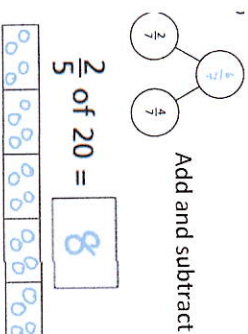
Roman Numerals
I = 1 V = 5 X = 10
L = 50 C = 100



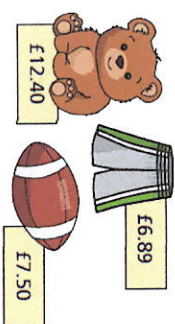
Key categories and concepts
Number and place value
Addition and subtraction
Multiplication and division
Fractions
Measurement
Geometry - shapes Geometry - Position and direction
Statistics



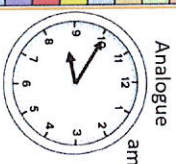
Fractions



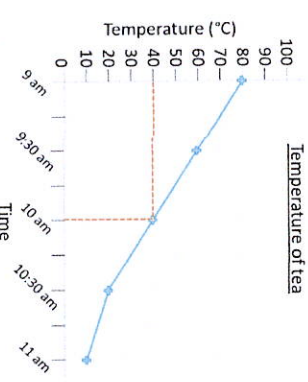
Measurement



Estimating amounts of money



Statistics

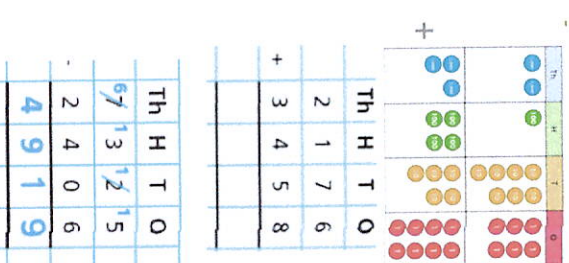


1) What was the temperature of the tea at 10 am?
40 degrees Celsius

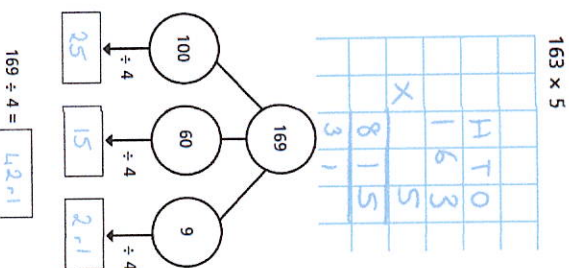
Key Vocabulary

Negative number	A number below zero
exchange	Swap for the same amount like 10 ones and one rod
equivalent	The same
estimate	A sensible guess based on what you know
translate	Movement on a grid which is up, down, left and right
axis	Sides of a grid
coordinates	Points on a grid
Quadrilateral	A shape with 4 sides and 4 corners
Symmetry	A line which shows the same on both sides
area	The amount of squares inside a shape

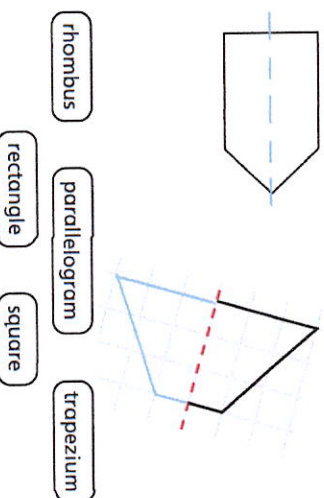
Addition and subtraction



Multiplication and division



Properties of shapes



Position and direction

