

Year 6 Maths

Previous learning

Finding volume
Add and subtract decimals
Multiply and divide by 10, 100, 1000
Multiply, add and subtract fractions

Use a protractor for angles

Work out angles of lines and shapes

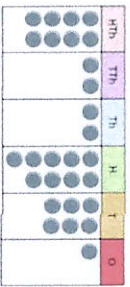
Look at nets of shapes

Read a time table

Find area

Number and place value

Rounded to the nearest	147,283
10	147,280
100	147,300
1,000	147,000
10,000	150,000
100,000	100,000



Fractions decimals percentages

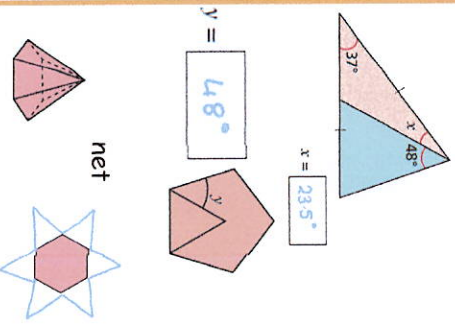
$$\frac{3}{8} \times \frac{2}{9} \times \frac{3}{10} = \frac{1}{150}$$

$$1 = \frac{250}{2,000} \text{ of } 8$$

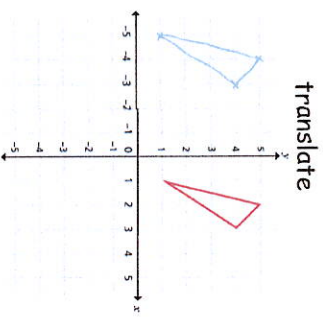
$$90\% \text{ of } 4,230 = 3,807$$

$$\frac{62}{500} \times 2 = \frac{124}{1000} = 0.124$$

Properties of shapes



Position and direction

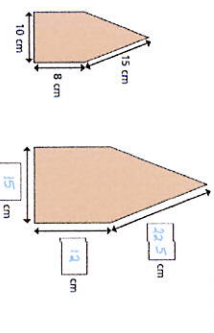
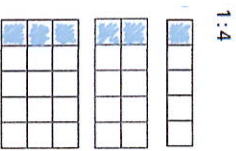


Addition, subtraction, multiplication and division

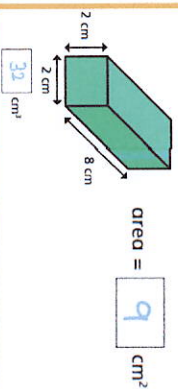
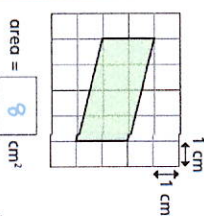
$$\begin{array}{r} 31 \\ 19 \\ -57 \\ \hline 19 \\ -57 \\ \hline 19 \\ -57 \\ \hline 0 \end{array}$$

$$\begin{array}{r} 1,207 \times 36 \\ \text{Th H T O} \\ 1207 \\ \times 36 \\ \hline 7242 \\ + 36210 \\ \hline 43452 \end{array}$$

Ratio and proportion

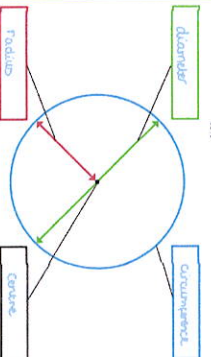
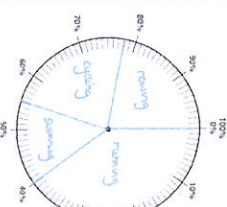


Measurement

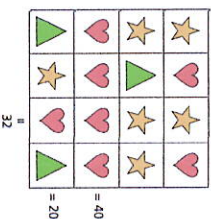


Statistics

Pie chart



Algebra



$$\text{heart} = 10, \text{star} = 6, \text{triangle} = 2$$

$$x + 5$$

Key Vocabulary

ratio	Shows the relationship between a set of values
scale factor	The amount you enlarge something by
enlarge	Making something bigger using scale factor
polygon	a flat two-dimensional shape with straight sides that are fully closed
translate	Move something across a 4 quadrant grid.
mean	Average set of numbers
pie chart	A chart that uses fractions to show answers
circumference	The distance around the edge of a circle
diameter	The distance from one edge, through the centre and through to the other side of a circle.
radius	The distance from the centre of a circle to the edge
formulae	A rule that uses letters to represent amounts which can be changed

Key categories and concepts

Number and place value
Addition and subtraction
Multiplication and division
Fractions
Measurement
Geometry – shapes
Geometry – Position and direction
Statistics
Algebra
Ratio and Proportion