



# Religion, Worldviews, Family and Community



## Key Vocabulary

Religion	The belief in and worship of a God or Gods, or any such system of belief and worship.
Church	A place where Christians go to worship.
Mandir	A place where Hindus go to worship, also known as a temple.
Interfaith	People of different religions being connected.
Harmony	A state of peaceful existence or agreement together.
Tolerance	Being willing to accept somebody or something who are not the same or agree with the same things as yourself.
Respect	Showing polite or caring behaviour towards somebody or something that you think is important.
Religious plurality	All religions in a diverse society having the right, freedom and safety to worship.
Sensitivity	Having the ability to understand other peoples feelings.
Acceptance	Allowing other people into the community, even if religions and beliefs are different.

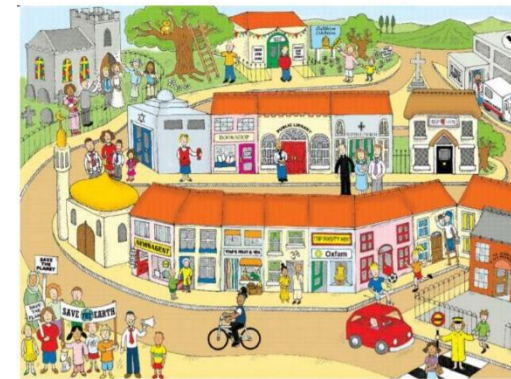
## Sticky Knowledge

There are different religions which build up Nottinghamshire's population.

How respect, sensitivity, acceptance and tolerance should look like in the local area.

We can influence how strong families and communities are.

Interfaith is an important aspect of respect, sensitivity, acceptance and tolerance.



## Prior Knowledge

What do religions look like in the world?

