

Year 4—Data and information

Data logging

Previous learning

Year 1

Data and information - Grouping data:

I know that object labels tell me what something is.

I know how to use object labels to sort and group objects.

Year 2

Data and information – Pictograms:

I know what a tally chart is and that it can be used to collected data by creating notches in a table.

I know that data can be input in software on a computer such as excel and then made into tables.

Year 3

Data and information – Branching databases:

I know that branch databases can be created using technology such as excel.

I know that branch databases are used to identify an object based on attributes.

I know that objects can be grouped using yes/no questions.

Know how to transfer data such as pictures from one device to another.

Key information

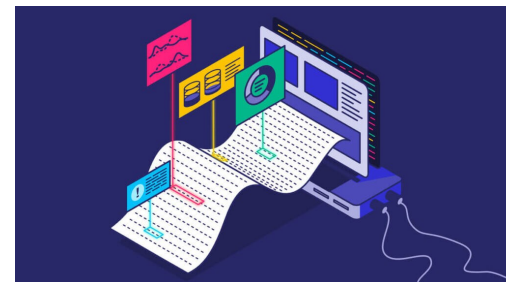
Data is used all of the time in and out of school.

Companies and schools can use data to know and track students results or to show what money has been spent on.

Technology makes it easier to compare this data which allows people to see where there is a mistake or how they can boost performance.

Data logging is important and helps people or companies collect data through different means. If you watch the weather on television, that data has been collected using technology and then presented to you.

Why is data logging useful?



Curriculum links

Science

- Making systematic and careful observations and where appropriate, taking accurate measurements using standard units, using a range of equipment, including thermometers and data loggers.

Key Vocabulary

Data	Facts and statistics collected together for reference or analysis.
Analyse	Examine something methodically and in detail, normally so you can explain it.
Database	A structure set of data held in a computer, especially one that is accessible in various ways.
Logging	The act of keeping a log of events or data in a computer system.
Structure	The arrangement of and relations between the parts or elements of something complex.
Format	The way in which something is arranged or set out.
Attribute	Qualities and characteristics of something that describe and identify it.
Identifier	Something that recognizes who or what something is.